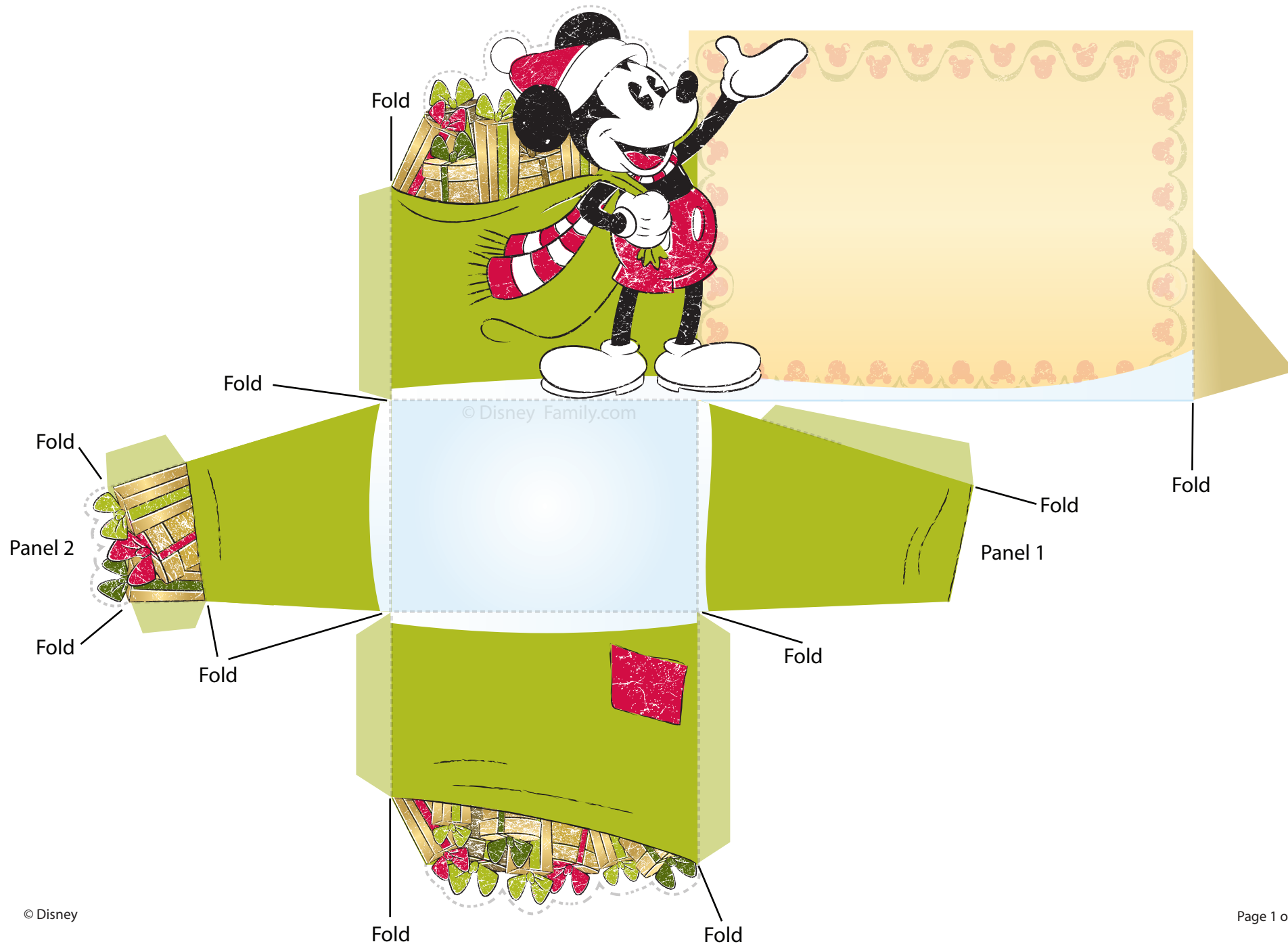


Mickey Mouse Place Card Holder



Mickey Mouse Place Card Holder

Count the number of guests who will be attending your Christmas dinner and print out that number of place cards. Before you begin folding and gluing, write the names of the guests on each place card. You can also write "Merry Christmas" or add stickers.

Next, cut out the entire place card. Fold along the dark green lines to create a box (without a lid) behind Mickey and the presents. Fold the light green tabs and glue or tape them to hold the box in place. Fold the light green tab that extends from the right side of the place card away from you to help the place card holder stand upright.

Your place card holder is now complete! After the glue has dried, add candy or mints (or anything you like) in the open area of the place card holder. Then set them out on the dinner table.